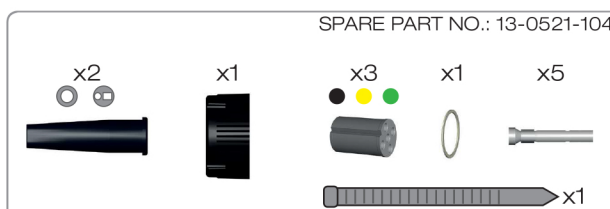


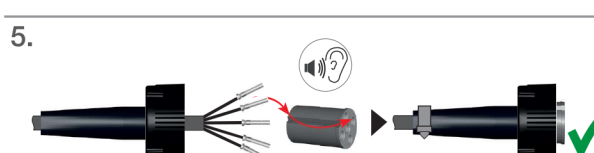
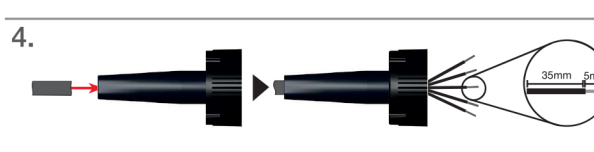
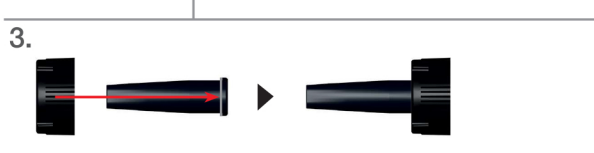
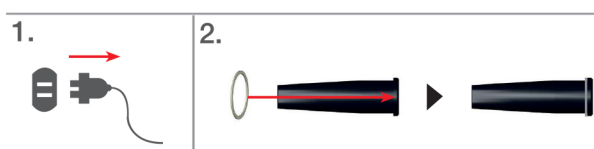
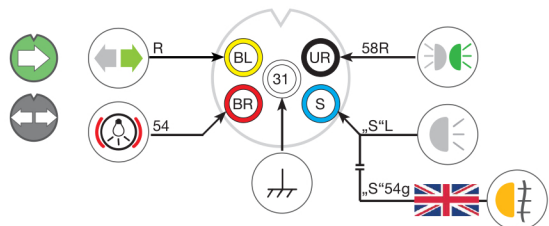
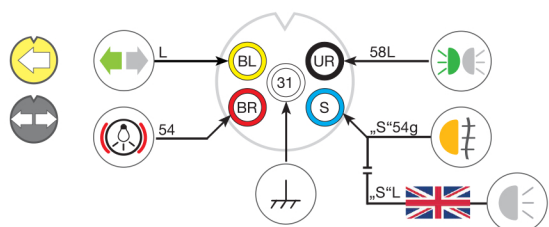
Bayonet 5 pin female

Mounting instruction Bayonet 5 pin female

Bayonet 5 pin



Bayonet 5 pin



Imax=16A



Imax=16A



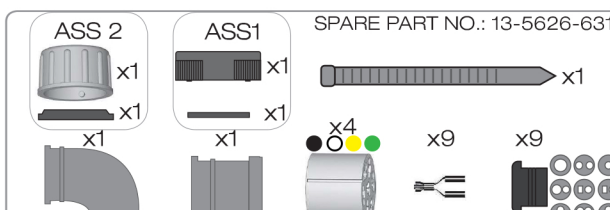
18

19

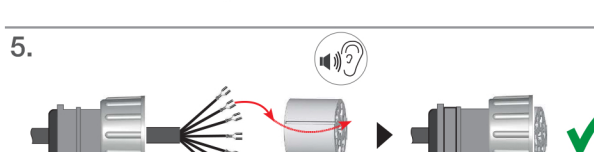
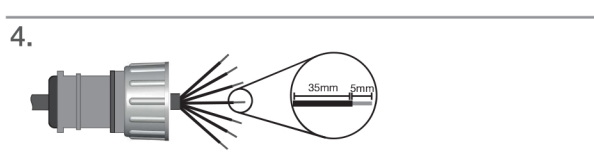
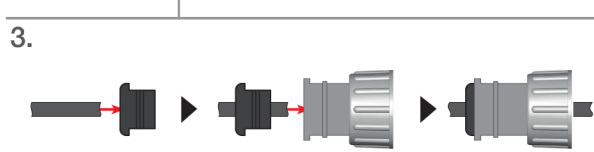
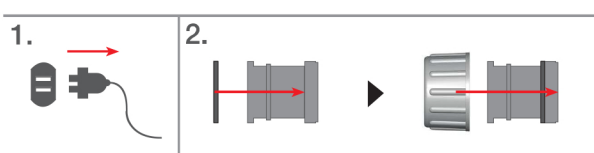
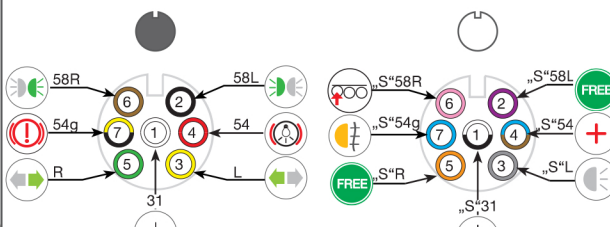
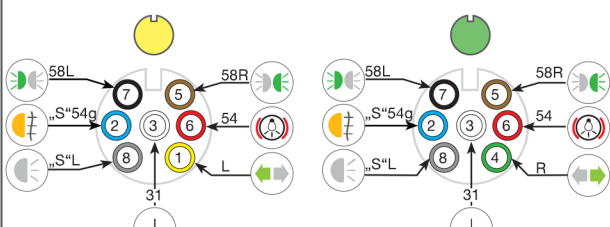
ASS1, ASS2, ASS2.1 7 pin female

Mounting instruction ASS1, ASS2 7 pin female

ASS1, ASS2, ASS2.1, 7 pin



ASS1, ASS2, ASS2.1, 7 pin



Imax=25A



ADR-Zone 2 IP68 ADR-Zone 2 IP6K9K

Imax=25A



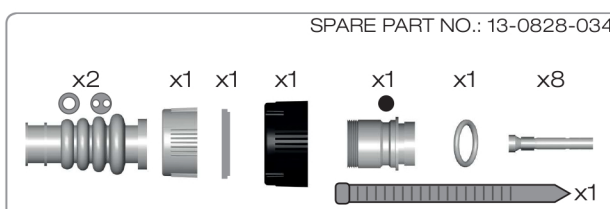
36

37

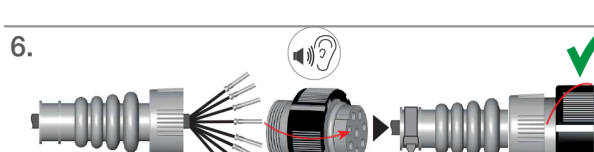
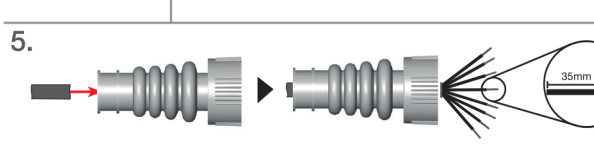
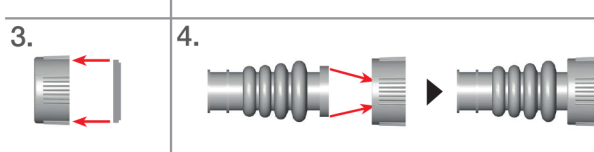
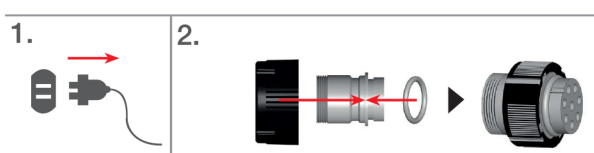
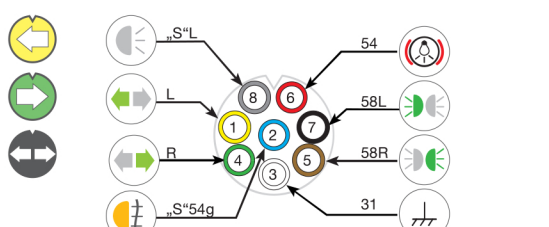
Bayonet 8 pin female

Mounting instruction Bayonet 8 pin female

Bayonet 8 pin



Bayonet 8 pin



Imax=16A



Imax=16A



22

23